



reinventing edge protection

Continuous interlocking



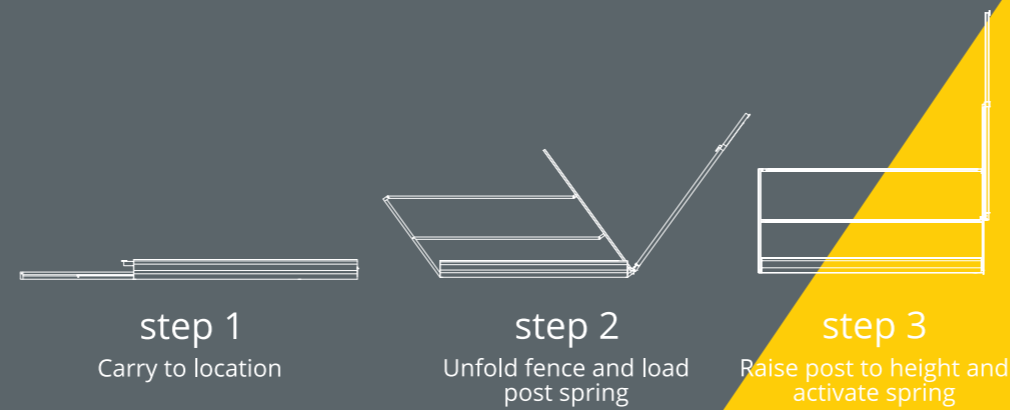
Overlapping fence



Efficient transportation



QUICK INSTALLATION



step 1
Carry to location

step 2
Unfold fence and load
post spring

step 3
Raise post to height and
activate spring

REVOLUTIONARY BREAKTHROUGH FOR GUARDRAIL

20% LESS VOLUME MATERIAL

30% LIGHTER

90% FASTER

YEARS OF REUSABILITY



Compact & Lightweight



Launching of a totally new REVOLUTION in edge protection that has never been constructed before.

Specifically designed for buildings with limited ground and floor space; the Z Fence compacts, taking up 20% less footage than lumber. It is 30% lighter to handle than lumber and can be used in conjunction with drill fix post, embedded sleeve anchors, or with slab grabs.

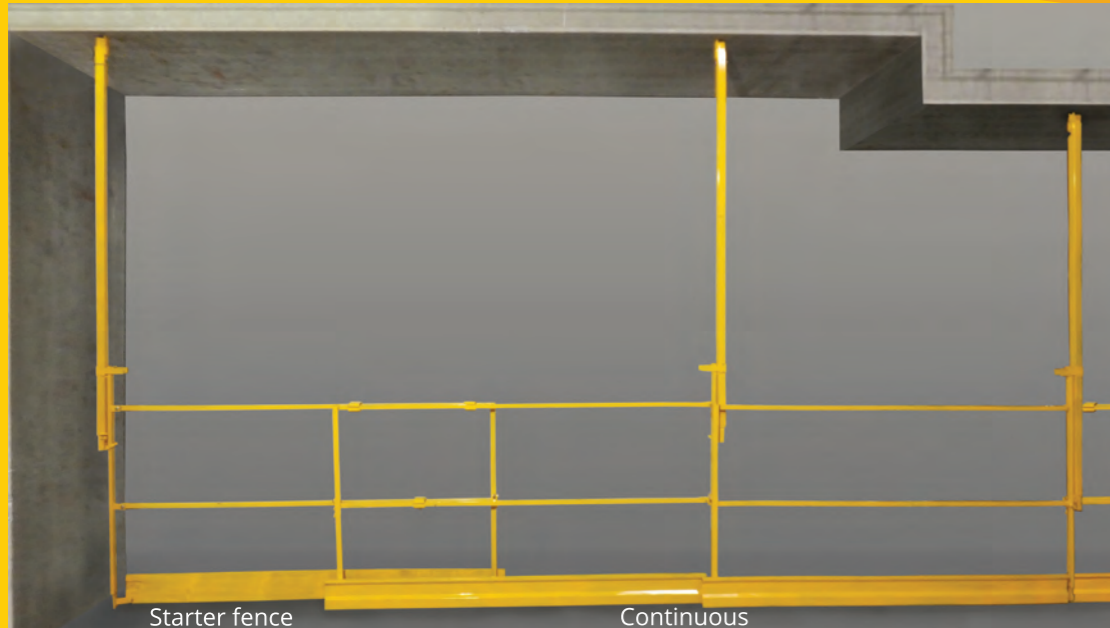
The cost-effectiveness of using the Z Fence versus lumber/cable/net systems is clearly demonstrated when accurate estimates are undertaken. They clearly show that the Z Fence system's life span and integrity is what makes it a superior product and creates long term cost savings.



Z FENCE VS. 2x4 COMPARISON



One pack includes 1 crate and 54 Z FENCES with post for a total of 378 Linear Feet of Perimeter Edge Protection.



Starter fence

Continuous

Z FENCE



Continuous Fence Interlocking



Drill fix foot

Z FENCE foot attachments

	Z FENCE	2x4
Dimensions	10.5' x 6" x 3"	/
Volume (per LF)	0.22 ft³	0.27 ft³
Volume (per LF)	83.16 ft ³	106.95 ft ³
Weight (per LF)	7.5 lb	11.0605 lb
Weight (per LF)	2833.6 lb	4424.2 lb
Installation Time (per LF)	2.85 seconds	40 seconds

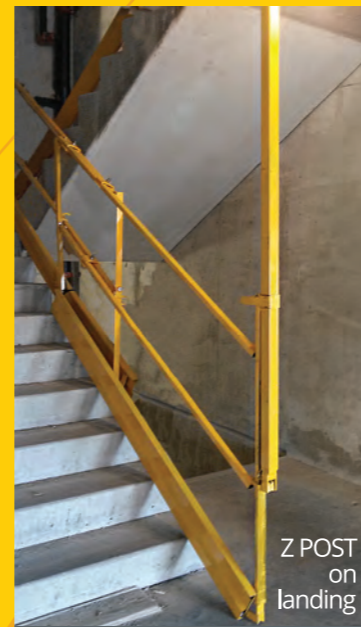
Yellow Powder Coated and/or **Electroplated** and/or **Hot Dip Galvanized**



Z FENCE with 1/4" Debris Netting



90° vertical access

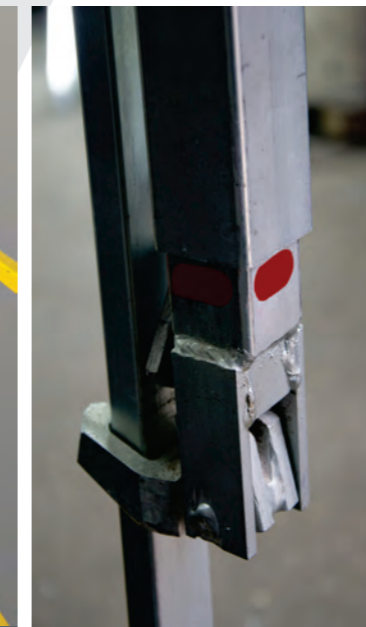


Z POST on landing

Z FENCE on stairs



Corner connection



Visual inspection-Safety Gauge

2x4

